

CORPORATE PROFILE

COMPANY OVERVIEW



Marsmint & Freeman is a member company of the Kellett & Singleton Group.

It meets the demanding requirements of large scale capital projects in the Middle East, Africa and South Asia region.

The key strengths of the company are highlighted below:

- Professional in-house team for fit-out and installation services
- Independent warehousing division
- Global end to end logistics capability
- Regional expertise in supervising and monitoring an installation programme
- Existing commercial transport vehicle fleet in the region
- Immediate Deployment of all services



REGIONAL SERVICE PORTFOLIO



- ➔ **FF&E Management**
Freight Solutions, Warehousing & Installation
- ➔ **OS&E Management**
Freight Solutions, Warehousing & Inventory
- ➔ **Project Site Management**
Vendors / Suppliers / Procurement firms / Sub-Contractors



THE TEAM



- ➔ Proven track record of unprecedented competence of delivering multiple challenging projects
- ➔ Collaborative work experience and expertise of over 5 years in Project Management, Freight-Forwarding, Logistics and Interior Fit-Out
- ➔ Commercial, Operational and Back-End Coordination Team



JW MARRIOTT MARQUIS, DUBAI



FF&E Installation Program

- 72 Floors ■ 684 Rooms ■ 120 Suites ■ 10 Restaurants ■ 4 Bars ■ 2 Lounges ■ 2 Ballrooms
- 24 Meeting Rooms ■ Pool areas ■ Spa



EASTERN MANGROVES HOTEL & SPA, ABU DHABI



Installation of FF&E at Pool Deck located at Luxury Apartments



FAIRMONT, THE PALM



FF&E Installation Program

- 383 Rooms & Suites ■ Meeting Rooms ■ Business Center ■ Restaurants ■ Gold Lounge
- Pool areas ■ Health Club & Spa



FAZARIS RESTAURANT, DUBAI



Located on the 5th floor of The Address Downtown Dubai



MEYDAN BEACH CLUB, DUBAI



FF&E Installation Program



ST. REGIS, SAADIYAT ISLAND



FF&E Installation Program

- 376 GUEST ROOMS ■ Porte Cochere ■ Mediterranean ■ Steak House ■ Banqueting ■ Business center
- Lobby lounge / Bar ■ Chilean Restaurant ■ Kids Club ■ Mango Toast ■ Family pool ■ Adult pool
- Beach pool ■ Apartment / Retail circulation ■ Club House ■ Health & Racquet ■ Art center ■ Wine Room
- Moroccan Spa ■ Contemporary Spa ■ Thai Spa



Project Duration: Sept 2011 - Jan 2012

GROSVENOR HOUSE 2, DUBAI



- 178 Guest Rooms ▪ 211 Apartments ▪ 5 Private Villas ▪ 1 SPA ▪ 1 Club ▪ 1 Restaurant
- 1 Business Center and Executive ▪ 1 Lounge ▪ 1 Bar ▪ 1 Pool Area



Project Duration: Apr 2011 - Aug 2011

ARMANI HOTEL BURJ KHALIFA, DUBAI



- 160 Guest Rooms ▪ 144 Apartments ▪ 1 Lobby ▪ 3 Restaurants ▪ 1 Lounge Bar ▪ 1 Gentlemen's Club
- 1 Coffee Shop ▪ 2 Ballrooms ▪ 1 Business Centre ▪ 1 Spa ▪ 1 Majlis ▪ 1 Prayer Room



Project Duration: Nov 2009 - Mar 2010

ALOFT ABU DHABI NATIONAL EXHIBITION CENTRE, ABU DHABI



■ Wedding Hall & Bridal Suite

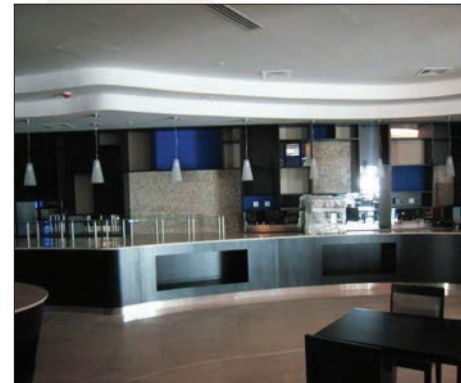


Project Duration: Jan 2010 - Feb 2010

EXPRESS BY HOLIDAY INN GARHOUD, DUBAI



■ 381 Guest Rooms



Project Duration: Nov 2009 - Jan 2010

ROTANA YAS ISLAND, ABU DHABI



- 282 Guest Rooms ▪ 27 Suites ▪ 1 Lobby ▪ 2 Restaurants ▪ 1 Dining Area ▪ 1 Bar ▪ 1 Ballroom
- 1 Business Centre and Executive Lounge ▪ 2 Meeting Rooms ▪ 1 Health Club

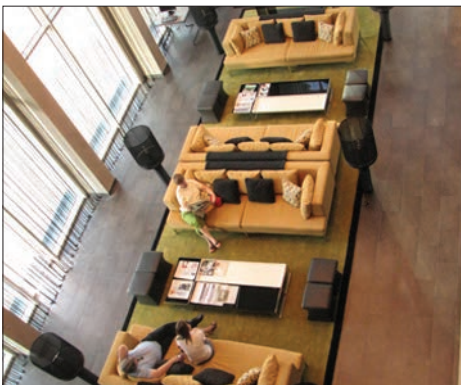
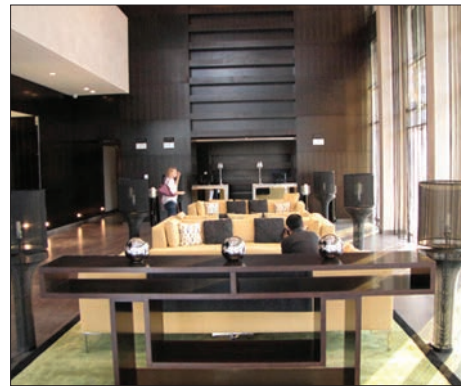


Project Duration: June - Sep 2009

CENTRO YAS ISLAND, ABU DHABI



- 257 Guest Rooms ▪ 2 Disabled Rooms ▪ 1 Lobby
- 1 Dining Area ▪ 1 Bar ▪ 2 Meeting Rooms ▪ 1 Pool Area



Project Duration: June - Sep 2009

STAYBRIDGE SUITES YAS ISLAND, ABU DHABI



- 165 Suites (Incl Studios, 1BDRM, 2BDRM and 3 BDRM) ▪ 1 Lobby ▪ 1 Dining Area
- 1 Lounge ▪ 1 Den ▪ 1 Pool Area ▪ 1 Lounge ▪ 1 Pool Area



Project Duration: June - Sep 2009

CROWNE PLAZA YAS ISLAND, ABU DHABI



- 383 Guest Rooms ▪ 15 Suites ▪ 30 Apartments ▪ 4 Lobbies ▪ 2 Restaurants ▪ 3 Bars
- 1 Business Centre and Executive Lounge ▪ 1 Ballroom ▪ 1 Lounge ▪ 1 Pool Area

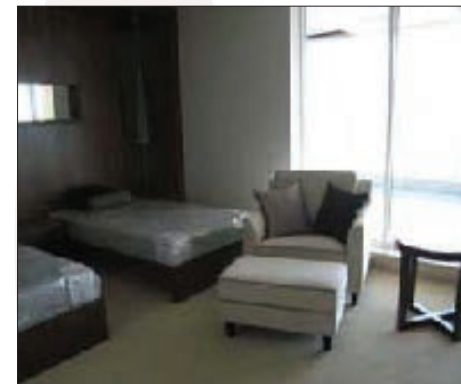


Project Duration: June - Sep 2009

EMIRATES PARK TOWER MOCK UP DUBAI



Freight, Warehousing and FFE Installation Programme



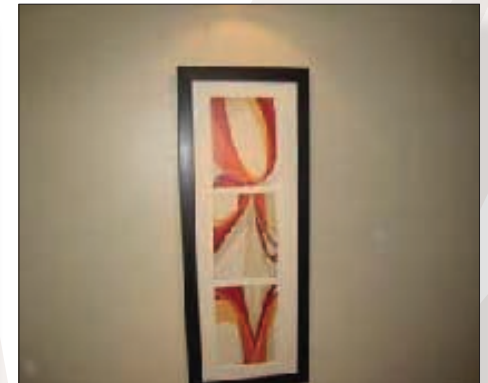
Project Duration: July 2008

NOVOTEL AND IBIS DUBAI



FFE Installation Programme

- 500 Rooms



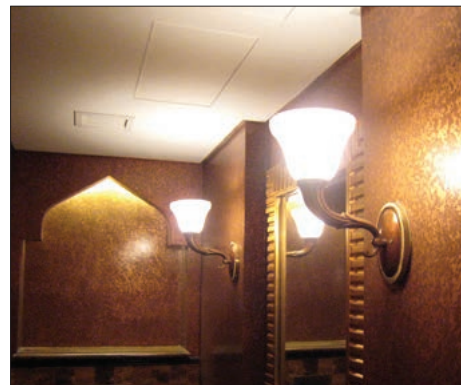
Project Duration: Aug 2008 - Jan 2009

W HOTEL DOHA, QATAR



Freight, Warehousing and FFE / OSE Installation Programme

■ 178 Rooms ■ 165 Apartments

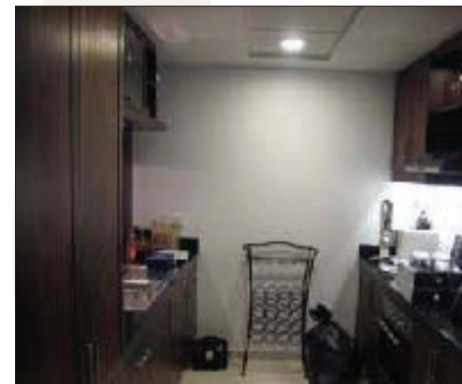
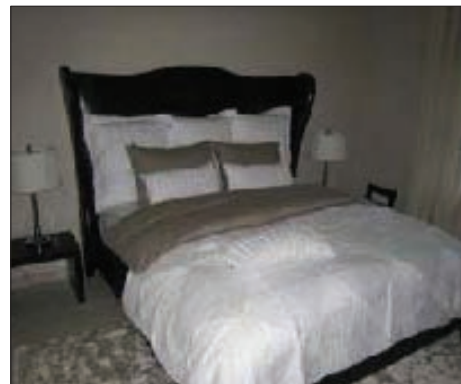


Project Duration: Feb 2008 - Jan 2009

THE ONE - BURJ RESIDENCES DOWNTOWN, DUBAI



Freight, Warehousing and FFE / OSE Installation Programme



Project Duration: Sept 2008

THE ONE - SHORELINE APARTMENTS PALM JUMEIRAH, DUBAI



Freight, Warehousing and FFE / OSE Installation Programme



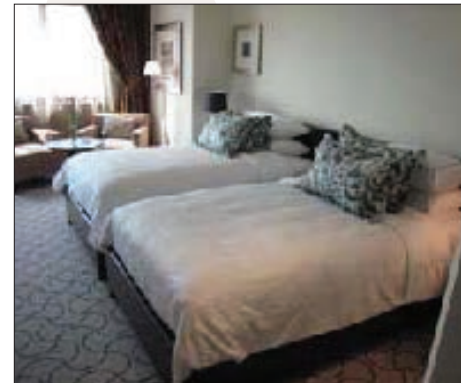
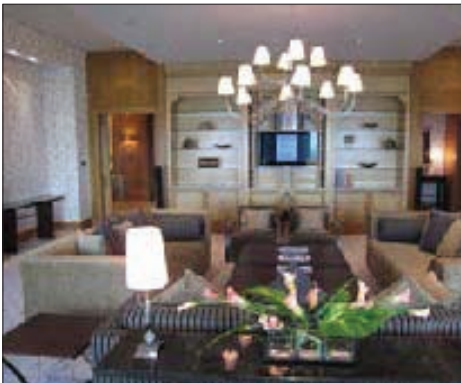
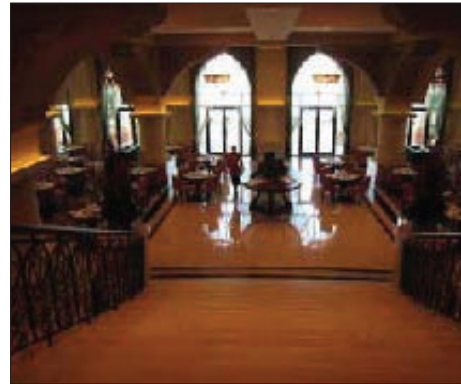
Project Duration: Sept 2008

SHANGRI-LA ABU DHABI



FFE Installation Programme

- 214 Rooms
- 7 Villas
- 162 Apartments

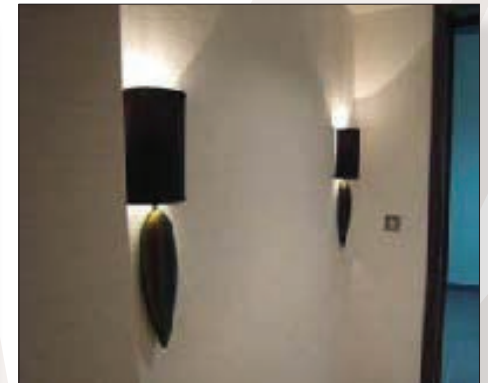
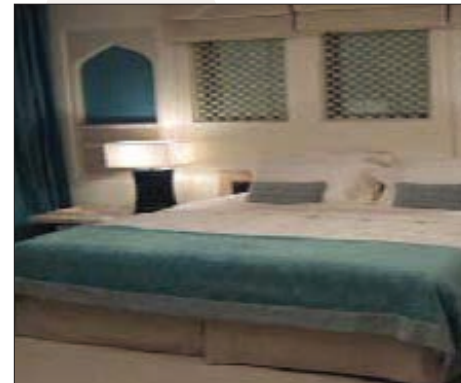
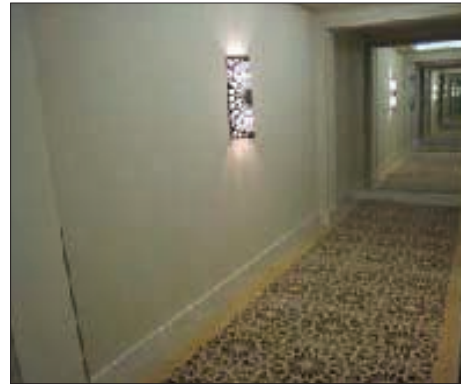


Project Duration: Feb 2007 - May 2008

SALAAM HOTEL MOCK UP BAHRAIN



Freight, Warehousing and FFE Installation Programme - End 2009



Project Duration: Aug 2008

HOSPITALITY WAREHOUSING SERVICES



Dubai, Abu Dhabi, Doha and Bahrain



CONTACT US



MARSMINT & FREEMAN

Hamdan Bldg. - Baker Siddiqui St.,
Deira, DUBAI - U.A.E.

Tel : + 971 4 236 7380

Fax : + 971 4 236 7839

email: commercial@marsmintfreeman.com

thank
you

